



# CP-102U/CP-102UL

## 2-port RS-232 Universal PCI Smart Serial Boards

### Features

- Over 800 Kbps data throughput, for top performance
- Serial communication speed up to 921.6 Kbps
- 128-byte FIFO and on-chip H/W, S/W flow control
- Universal PCI compatible with 3.3/5V PCI and PCI-X
- MD1 Low profile board (CP-102UL) for compact-sized PCs
- Windows 2003/XP/2000/98/ME, Linux, Unix driver support
- Easy maintenance with on-board LED display and management software
- Single 5 VDC power requirement
- On-board 15 KV ESD protection



### Overview

CP-102U/UL is a Smart Universal PCI Multiport Serial Board designed for POS and ATM applications, and for use by industrial automation system manufacturers and system integrators. CP-102U/UL is compatible with all popular operating systems, and each of its 2 RS-232 serial ports supports data rates of

up to 921.6 Kbps, and provides full modem control signals, ensuring compatibility with a wide range of serial peripherals. In addition, CP-102U/UL works with both 3.3V and 5V PCI buses, allowing the board to be installed in virtually any available PC server.

### Designed for Standard and Compact-sized Computers

CP-102UL is an MD1 low profile board, compatible with 3.3V and 5V PCI bus, that only requires a 5 VDC power supply. This

means that CP-102UL fits any sized host computer, ranging from shoebox to standard industrial sized PCs.

### Top Performance with 128-byte FIFO and on-chip H/W, S/W Flow Control

Our 17 plus years of experience in serial board design is now concentrated in Moxa's new top performance serial data transmission chip, called Turbo Serial Engine™, which equips the CP-102U/CP-102UL series board with a 128-byte FIFO, on-chip

hardware and software flow control, and burst data mode. This makes CP-102U/CP-102UL the top performing smart multiport serial board in the world.

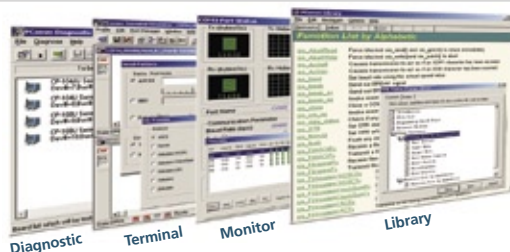
### Support for Major Windows and Linux/Unix OS drivers

Moxa continues to support today's mainstream operating systems, and CP-102U/UL provides field proof. Reliable Windows COM and Linux/Unix TTY drivers are available for use with

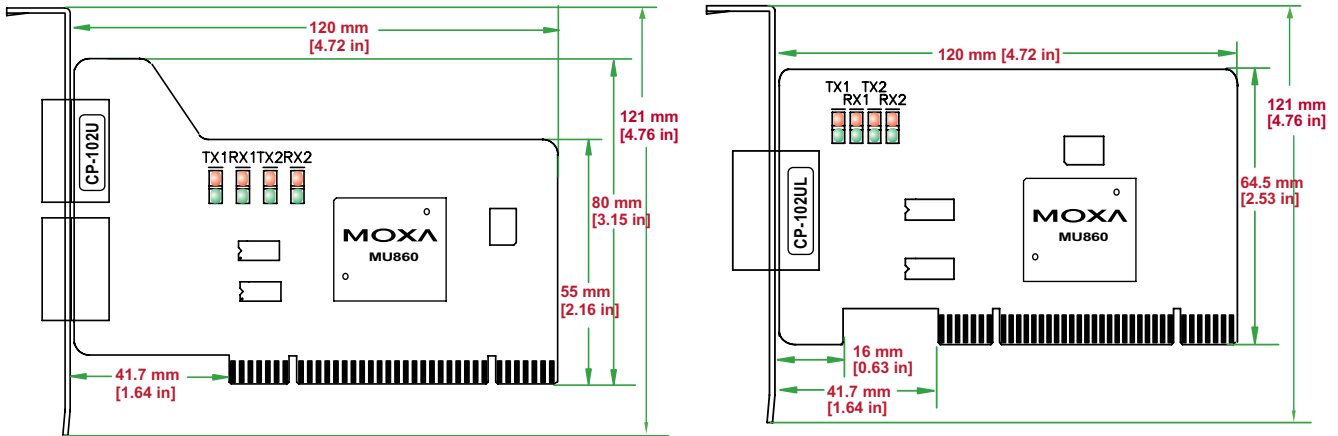
CP-102U/UL, with other operating systems, such as Windows XP embedded also supported for embedded integration.

### PComm Lite Utility for Easy Management and Software Development

CP-102U/UL's software package includes the PComm Lite utility, which is used to diagnose and monitor the status of installed Moxa serial boards. In addition, PComm Library, with its basic serial I/O and file transfer library, is supplied free for easy software development under Windows.



## Dimensions



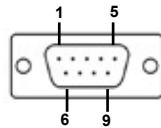
## Connection Options

### CBL-M25M9x2-50

(DB25 to male DB9 x 2)



### Male DB9



PIN	RS-232
1	DCD
2	RxD
3	TxD
4	DTR
5	GND
6	DSR
7	RTS
8	CTS
9	---

## Specifications

### Hardware

**Connectors:** Male DB9 (CP-102U), Female DB25 (CP-102UL)

**Comm. Controller:** MOXA UART (16C550C compatible)

### Interface

**Bus Interface:** 32-bit Universal PCI

**Number of Ports:** 2

**Max No. of Boards:** 4 (only one IRQ required)

**Signals:** TxD, RxD, RTS, CTS, DTR, DSR, DCD, GND

### Performance

**Baud Rate:** 50 bps to 921.6 Kbps

### Configuration

**Data Bits:** 5, 6, 7, 8

**Stop Bits:** 1, 1.5, 2

**I/O address/IRQ:** BIOS assigned

**Parity:** None, Even, Odd, Space, Mark

**Flow Control:** RTS/CTS, XON/XOFF

### Operating Systems:

Windows NT/2000/XP/2003, Windows 95/98/ME, Linux 2.4/2.6 (Red Hat/SuSe...), FreeBSD, SCO OpenServer, SCO Unixware 7, SCO Unixware 2.1, Windows XP Embedded, DOS

### Power and Environment

**Power Requirement:** 93 mA (+5V) (CP-102U & CP-102UL)

**Operating Temperature:** 0 to 55°C

**Operating Humidity:** 5 to 95% RH

**Storage Temperature:** -20 to 85°C

### Dimensions (W x D):

CP-102U: 120 x 80 mm (4.72 x 3.15 in)

CP-102UL: 120 x 64.5 mm (4.72 x 2.53 in)

(LP Bracket: 80 mm) (Std. Bracket: 121 mm)

**Surge Protection:** Embedded 15 KV ESD Surge Protection

**Regulatory Approvals:** CE Class B, FCC Class B

**Warranty:** 5 years

## Ordering Information

### CP-102U

**2-port RS-232 Universal PCI Smart MSB**

**All items Include:**

- MSB with standard bracket
- Documentation & Software CD-ROM
- Quick Installation Guide

### CP-102UL

**2-port RS-232 Universal PCI Smart MSB, Low Profile**

**All items Include:**

- MSB with standard bracket and low profile bracket
- DB9 Connection cable (CBL-M25M9x2-50)
- Documentation & Software CD-ROM
- Quick Installation Guide