

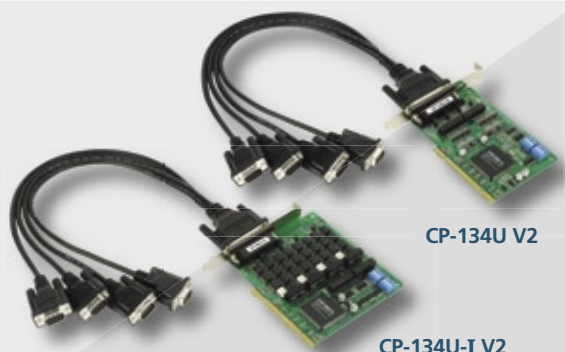


CP-134U/CP-134U-I V2

4-port RS-422/485 Universal PCI Smart Serial Board with 2 KV Isolation Protection

Features

- Ports 1 and 2 support RS-232 and RS-422/485
- Over 700 Kbps data throughput, for top performance
- 4-port RS-422/485 interface with ADDC™ and up to 921.6 Kbps
- Built-in 15 KV ESD and optional 2 KV optical isolation protection
- 128-byte FIFO and on-chip H/W, S/W flow control
- Universal PCI compatible with 3.3/5V PCI and PCI-X
- Windows 2003/XP/2000/98/ME, Linux, Unix driver support



Overview

CP-134U V2 Series of Smart Multiport Serial Boards is designed for Industrial Automation system integrators, long distance, multi-point PC-based data acquisition applications.

On-chip Automatic Data Direction Control for Precision RS-485 Communication

RS-485 communication requires precise timing control for enabling and disabling the line driver. Powered by Moxa's Turbo Serial Engine™ chip that comes with on-chip ADDC™, sending RS-485 packets through CP-134U V2 is as easy as using RS-232.

Top Performance with 128-byte FIFO and on-chip H/W, S/W Flow Control

Our 17 plus years of experience in serial board design is now concentrated in Moxa's new top performance serial data transmission chip, called Turbo Serial Engine™, which equips the CP-134U/CP-134U-I V2 series board with a 128-byte FIFO, on-

RS-485 multidrop for up to 31 devices within 1.2 km

CP-134U V2 Universal PCI Multiport Serial Board provides 4 RS-422/485 serial ports, each capable of data rates up to 921.6 Kbps. In RS-485 mode, the serial port can connect up to 31 daisy-chained RS-485 devices within a range of 1.2 km. For long distance RS-485 communication, optional 2 KV isolation protection is available (CP-134U-I V2) to prevent equipment damage.

chip hardware and software flow control, and burst data mode. This makes CP-134U/CP-134U-I V2 the top performing smart multiport serial board in the world.

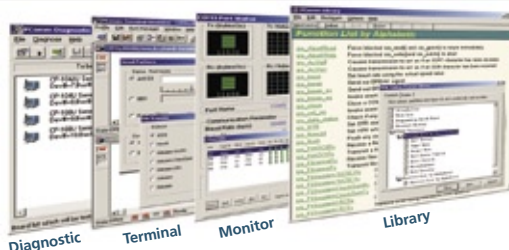
Support for Major Windows and Linux/Unix OS drivers

Moxa continues to support today's mainstream operating systems, and CP-134UV2 provides field proof. Reliable Windows COM and Linux/Unix TTY drivers are available for use with

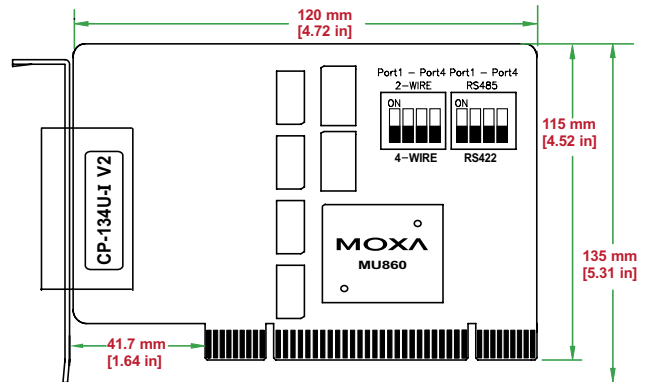
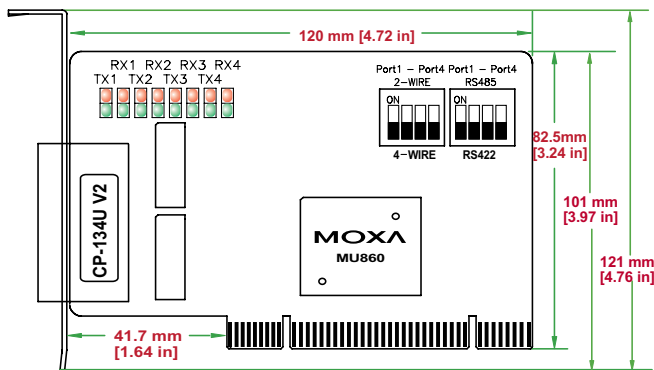
CP-134U V2, with other operating systems, such as Windows XP embedded also supported for embedded integration.

PComm Lite Utility for Easy Management and Software Development

CP-134U's software package includes the PComm Lite utility, which is used to diagnose and monitor the status of installed Moxa serial boards. In addition, PComm Library, with its basic serial I/O and file transfer library, is supplied free for easy software development under Windows.



Dimensions

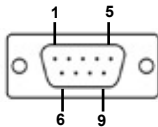


Connection Options

CBL-M44M9x4-50
(DB44 to male DB9 x 4)



Male DB9

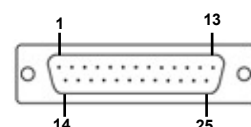


PIN	RS-232	RS-422	4-wire RS-485	2-wire RS-485
1	DCD	TxD-(A)	TxD-(A)	---
2	RxD	TxD+(B)	TxD+(B)	---
3	TxD	RxD+(B)	RxD+(B)	Data+(B)
4	DTR	RxD-(A)	RxD-(A)	Data-(A)
5	GND	GND	GND	GND
6	DSR	RTS-(A)	---	---
7	RTS	RTS+(B)	---	---
8	CTS	CTS+(B)	---	---
9	---	CTS-(A)	---	---

CBL-M44M25x4-50
(DB44 to male DB25 x 4)



Male DB25



PIN	RS-232	RS-422	4-wire RS-485	2-wire RS-485
2	TxD	RxD+(B)	RxD+(B)	Data+(B)
3	RxD	TxD+(B)	TxD+(B)	---
4	RTS	RTS+(B)	---	---
5	CTS	CTS+(B)	---	---
6	DSR	RTS-(A)	---	---
7	GND	GND	GND	GND
8	DCD	TxD-(A)	TxD-(A)	---
20	DTR	RxD-(A)	RxD-(A)	Data-(A)
22	---	CTS-(A)	---	---

Specifications

Communications

Bus Interface: 32-bit Universal PCI

Number of Ports: 4

Max No. of Boards: 4

I/O address/IRQ: BIOS assigned

Comm. Controller: MOXA UART (16C550C compatible)

Baud Rate: 50 bps to 921.6 Kbps

Data Bits: 5, 6, 7, 8

Stop Bits: 1, 1.5, 2

Parity: None, Even, Odd, Space, Mark

Flow Control: RTS/ CTS, XON/ XOFF

Signals:

RS-232: TxD, RxD, RTS, CTS, DTR, DSR, DCD, GND

RS-422: TxD+(B), TxD-(A), RxD+(B), RxD-(A), RTS+(B), RTS-(A), CTS+(B), CTS-(A), GND

4-wire RS-485: TxD+(B), TxD-(A), RxD+(B), RxD-(A), GND

2-wire RS-485: Data+(B), Data-(A), GND

Ordering Information

CP-134U V2:

4-port RS-422/485 board (DB9 or DB25 cable included)

CP-134U-I V2:

4-port RS-422/485 board with 2 KV Isolation Protection (DB9 or DB25 cable included)

Connectors: Female DB44

Surge Protection: Embedded 15 KV ESD Surge Protection

Optical Isolation: 2 KV (CP-134U-I V2)

Power Consumption

CP-134U V2: 180 mA (+5V)

CP-134U-I V2: 850 mA (+5V)

Environmental

Operating Temperature: 0 to 55°C

Storage Temperature: -20 to 85°C

Humidity: 5 to 95% RH

Mechanical

Dimensions (W x D):

120 x 82.5 mm (4.72 x 3.24 in) (CP-134U V2)

120 x 115 mm (4.72 x 4.52 in) (CP-134U-I V2)

Regulatory Approvals: CE Class B, FCC Class B

Operating Systems:

Windows NT/2000/XP/2003, Windows 95/98/ME, Linux 2.4/2.6 (Red Hat/SuSe...), FreeBSD 4.x, Windows XP Embedded, DOS

All items include: Documentation & Software CD-ROM

Optional Connectors (choose one per board)

CBL-M44M9x4-50: 4-port male DB9 connection cable

CBL-M44M25x4-50: 4-port male DB25 connection cable