

- GSM/GPRS packet transmission
- Integral GSM 900 / 1800 modem
- Autonomic login onto GPRS network
- Binary inputs (MT-301/302/303/304)
- Binary outputs (MT-301/303)
- Analog inputs 4-20 mA (MT-301/304)
- Event triggered messaging
- Removable terminal blocks
- Integral Li-Polymer battery backup
- DIN rail mounting (option)
- Easy configuration software

Designed with the latest GSM/GPRS technology solutions Telemetry Modules MT-301/302/303/304 are dedicated, monitoring market oriented devices for efficient data transmission over GSM/GPRS network in packet and SMS transmission modes simultaneously. Compare to professional series MT-1xx this product line provides cost effective solution not only for small telemetry and security applications but also for scalable, multi-node data acquisition systems where local control and communication with external devices is not required.

Resources

MT-	301	302	303	304
Binary inputs / counters	4	8	6	7
Binary outputs	2	-	2	-
Analog inputs	2	-	-	1

- Firmware Flash memory with upgrade capabilities
- Real Time Clock (RTC)

Functionality

- Transmission modes
 - GPRS - packet transmission
 - SMS
- All binary inputs can be configured as counters (5Hz max)
- Easy configuration of event triggered SMS, data sending and call in
- Unsolicited messaging
- Simple, multipoint alarm configuration for both binary and analog inputs
- Local or remote (via GPRS) configuration
- Configurable access security - IP and Tel # list , optional password for configuration
- DIN rail mounting (option)
- Power supply 9...30V DC
- Removable terminal blocks
- Diagnostic LED's (GSM availability, GSM status/mode, programming port activity)
- Easy to use configuration software



MT-301/302/303/304

General

Dimensions (length x width x height)	124x63x30 mm
Weight	100 g
Fixing	DIN Rail 35mm
Operating temperature	0 ¹⁾ ... +55°C
Protection class	IP40

¹⁾ Temperatures below 0°C are not recommended due to physical properties of Li-Polymer battery

GSM/GPRS Modem

Modem type	WISMO Quick
GSM	Dual Band GSM/GPRS module EGSM900/1800
Frequency range (EGSM 900 MHz)	Transmitter: from 880 MHz to 915 MHz Receiver: from 925 MHz to 960 MHz
Output power (EGSM 900 MHz)	33 dBm (2W) - Class 4
Frequency range (EGSM 1800 MHz)	Transmitter: from 1710 MHz to 1785 MHz Receiver: from 1805 MHz to 1880 MHz
Output power (EGSM 1800 MHz)	30 dBm (1W) - Class 1
Modulation	0,3 GMSK
Channel spacing	200 kHz
Antenna	50Ω

Power supply

DC (12V, 24V)	9 ... 30 V	
Input current (A) (for 12V DC, battery charged)	Idle	Max
	0,02	0,50
Internal Li-Polymer battery	900 mAh	

Inputs I1...I8

Input voltage range	0 ... 30 V
Input resistance	5,4 kΩ
Input voltage ON (1)	> 9V
Input voltage OFF (0)	0 ... 3V

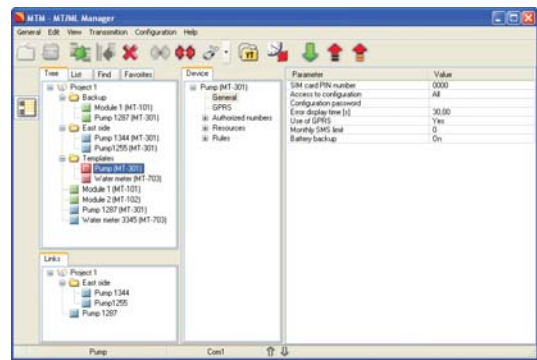
Outputs Q1...Q2

Recommended mean current for a single output	50mA
Single output current	350mA max.
Voltage drop at 350mA	<0,5V

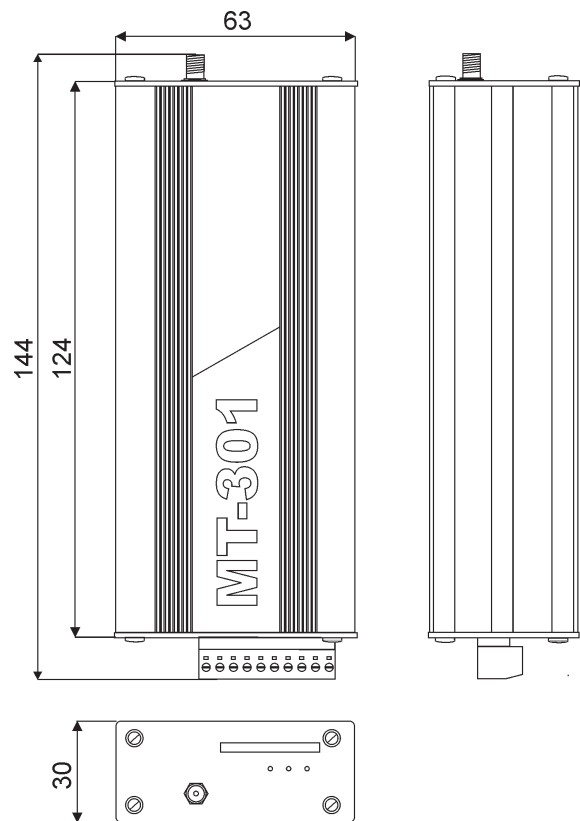
Analog inputs A1, A2 (4...20 mA)

Input current	4 ... 20 mA
Input resistance	100Ω typ.
Voltage drop at 20mA	< 2V max.
A/D converter	10 bitów
Accuracy	+/-3% max.

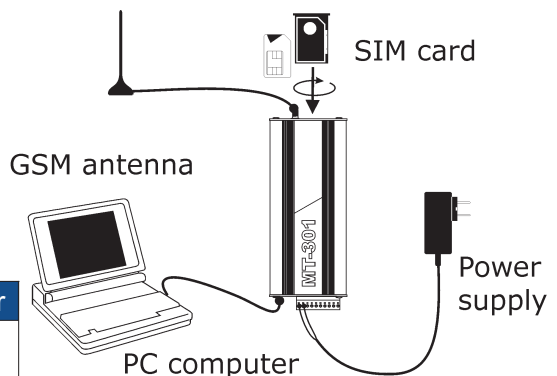
Configuration utility



Drawings and dimensions (in millimeters)



Basic connection



AIRICOM Ile de France Paris et Nord
65 rue de la Libération - 60710 Chevières
tél 03.44.91.04.14 - fax 03.44.91.04.15
www.airicom.com - info@airicom.com

AURECOM Bretagne et Grand Ouest
La Ville Cognac - 56430 Mauron
tél 02.97.22.79.72 - fax 02.97.22.90.51
www.aurecom.fr - info@aurecom.fr

RG2i Rhône Alpes Est et Sud-est
26 rue Bergson - 42000 Saint Etienne
tél 04.77.92.03.56 - fax 04.77.92.03.57
www.rg2i.com - info@rg2i.fr

Votre interlocuteur

Groupe 2AR



INVENTIA complies with ISO 9001:2000 certified Quality Management System!
This project is co-financed by EUROPEAN UNION from the European Regional Development Fund resources.